

Terms

Payment in full is required at the time of enrollment.

Programs run per calendar year, starting on January 1st and ending December 31st.

An additional **10% discount** will be given to 3 or more horses enrolled by the same owner.

Unused services cannot be carried over into the following year.

Refunds will be made as credit if sale or loss of the enrolled horse occurs and if no balance on the owner's account is outstanding.

There will be no substitutions of horses or services.

Draft horses = 2x de-wormer cost

Scheduling: Technicians are available to assist doctors with your appointments as necessary. You **do not need be present** as long as we are notified in advance of your absence.

COUNTRY VIEW VETERINARY SERVICE



COUNTRY VIEW VETERINARY SERVICE



Country View Veterinary Service is proud to introduce our new

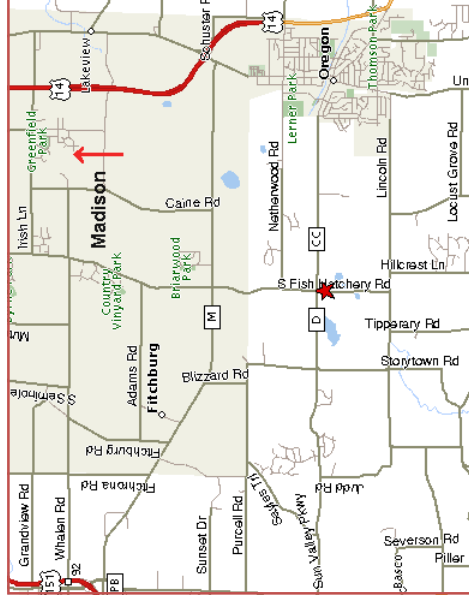
2012

Equine Wellness Programs

Same great quality.
Increased Savings!

1350 S. Fish Hatchery Rd
Oregon, WI 53575
608-835-0551

www.countryviewvets.com



1350 South Fish Hatchery Rd
Oregon, WI 53575

Phone: 608-835-0551
www.countryviewvets.com
customerservice@countryviewvets.com

Standard Wellness Program

Spring Preventive Care (March-April)

- * Stable Call
- * Physical Exam
- * Nutritional Consult
- * Coggins Testing
- * Dental Examination
- * Influenza/Rhinopneumonitis Vaccine
- * Encephalitis/Tetanus/West Nile Vaccine
- * Fecal Parasite and Sand Analysis

Fall Preventive Care (Sept-Oct)

- * Stable Call
- * Physical Examination
- * Nutritional Consult
- * Rabies Vaccine
- * Influenza/Rhinopneumonitis Vaccine
- * Fecal Parasite and Sand Analysis
- * Dental Examination
- * Dental Sedation
- * Dental Float

Deworming Protocol

- February - March Fecal Egg Count
- April Quest Plus®
- October Fecal Egg Count
- November Equimax™

Which Program is Right for You?

This year's Wellness Programs provide horse owners with a discount greater than **25%** off the regular costs!

Standard Wellness Program

- Designed for pleasure horses that occasionally leave the farm.
- Includes complete physical and nutritional evaluations, complete dental care, fecal exams and core vaccinations.

Premium Wellness Program

- Designed specifically for performance horses, elderly horses, or horses that need extra medical attention.

- In addition to the Standard Wellness Program, the Premium Program includes an **additional summertime visit**. It also includes your choice of a complete soundness evaluation or complete blood analysis screening for internal problems.

A one year supply of deworming medication is provided at the beginning of the year, labeled and ready to use. Medications can be picked up at our clinic or shipped to your barn (additional charges for shipping and handling may apply).

Additional Programs/Packages

Thinking of breeding or do you have a foal on the way? Ask about our Breeding Packages and Foal Wellness Programs.

Premium Wellness Program

Spring Preventive Care (March-April)

- * Stable Call
- * Physical Examination
- * Nutritional Consult
- * Coggins Testing
- * Dental Examination
- * Influenza/Rhinopneumonitis Vaccine
- * Encephalitis/Tetanus/West Nile Vaccine
- * Fecal Parasite Analysis

Summer Preventive Care (July-Aug)

- * Stable Call
- * Physical Examination
- * Nutritional Consult
- * Rhinopneumonitis Vaccine
- * Intranasal Strangles Vaccine
- * Complete Blood Analysis -OR-
- * A Complete Soundness Exam

Fall Preventive Care (Sept-Oct)

- * Stable Call
- * Physical Examination
- * Nutritional Consult
- * Rabies Vaccine
- * Influenza /Rhinopneumonitis Vaccine